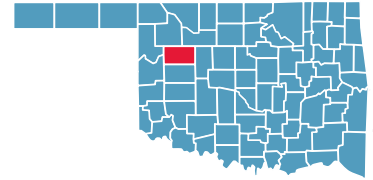


# DEWEY COUNTY

County Seat: Taloga



Number of Children (2005): 907

Number of Poor Children (2004): 161

Children are 19.9% of the county population

Child Poverty Rate: 17.8%

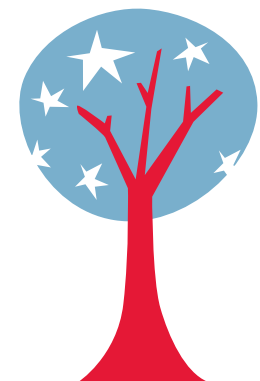
Economic Cluster: #1, Wealthiest

Indicator	Base Data	-	Worsened	Improved	+	Recent Data	Rank
<b>BIRTHWEIGHT</b>							
Low Birthweight (<5.5lbs)	5.5% of live births, 1994-96					9.3%	5.0% of live births, 2003-05 6
Very Low Birthweight (<3 lbs, 5oz)	2.1% of live births, 1994-96					69.8%	0.6% of live births, 2003-05 10
<b>BIRTHS TO TEENS</b>							
Births to Young Teens (ages 15-17)	22.7/1,000 girls 15-17, 1994-96					36.0%	14.5/1,000 girls 15-17, 2003-05 8
Births to Older Teens (ages 18-19)	146.6/1,000 girls 18-19, 1994-96					58.9%	60.2/1,000 girls 18-19, 2003-05 8
Births to Teens (ages 15-19)	53.4/1,000 girls 15-19, 1994-96					40.6%	31.7/1,000 girls 15-19, 2003-05 8
<b>CHILD ABUSE &amp; NEGLECT</b>							
	19.5 confirmed/1,000 children, FY 1995-97					25.1%	14.6 confirmed/1,000 children, FY 2004-06 29
<b>HIGH SCHOOL DROPOUTS</b>							
	1.1% youth <age 19, SY 2001/02-2003/04	-25.3%					1.4% youth <age 19, SY 2003/04-2005/06 15
<b>VIOLENT CRIME ARRESTS</b>							
	147.9/100,000 youths 10-17, 1994-96					100.0%	0.0/100,000 youths 10-17, 2003-05 1*
<b>MORTALITY</b>							
Infant Mortality (<age 1)	20.5/1,000 live births, 1994-96					9.3%	18.6/1,000 live births, 2003-05 75
Child Death (ages 1-14)	0.0/100,000 children 1-14, 1994-96					###	47.1/100,000 children 1-14, 2003-05 60
Teen Death (ages 15-19)	217.4/100,000 teens 15-19, 1994-96	-46.5%					318.5/100,000 teens 15-19, 2003-05 75
Child & Teen Death (ages 1-19)	47.6/100,000 youth 1-19, 1994-96	-173.8%					130.4/100,000 youth 1-19, 2003-05 74
<b>ECONOMIC CLUSTER</b>							
	79 Economic Index, 1994-96					41.8%	46 Economic Index, 2003-05 7

■ state change    ■ county change    ### = zero base - cannot calculate change    County Rank (1 = best) (77 = worst)  
 Changes of more than 100%—positive or negative—are graphed with broken bar    \*Indicates a tie with at least one other county.

## CHILDHOOD STRESS INDEX

Category / Indicator	Number	Rate	Rank
<b>BIRTH / GENETIC / BIOLOGICAL</b>			
Very Low Birthweight (2003-05)	0 avg annual	0.6%	10
Autism Reported on IEPs (ages 3-21, FFY 2005-07)	3 avg annual	3.0/1,000	74
<b>ENVIRONMENTAL FACTORS</b>			
Poverty (ages 0-17, 2004)	161	17.8%	16*
Unemployment (2003-05)	n/a	3.1%	6*
<b>EXPOSURE TO TRAUMA</b>			
FEMA Disaster Declarations (Nov 2000-Aug 2007)	9	0.1/1,000 children	2
Adverse Childhood Experiences (ACE Index, 2006/07 Kids Count)	25.3	n/a	17
<b>ACCESS TO TREATMENT</b>			
Untreated by DMHSAS, OJA or Medicaid (ages 9-17, FY 2005-06)			
Untreated Mentally Ill & Substance-Abusers	77 avg annual	73.7%	70*
Untreated Serious Emotional Disturbance	41 avg annual	62.4%	
Suicide (ages 5-24, 2003-05)	0 avg annual	0.0/100,000	1*



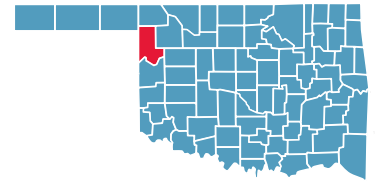
Childhood Stress Rank

**7**

\*Indicates a tie with at least one other county.  
 0.0%\* or 0\* indicates that, on average, services were provided to numbers of young clients which appear to serve all of the estimated need (prevalence) in the county

# ELLIS COUNTY

County Seat: Arnett



Number of Children (2005): 814

Number of Poor Children (2004): 139

Children are 20.5% of the county population

Child Poverty Rate: 17.0%

Economic Cluster: #1, Wealthiest

Indicator	Base Data	-	Worsened	Improved	+	Recent Data	Rank
<b>BIRTHWEIGHT</b>							
Low Birthweight (<5.5lbs)	5.4% of live births, 1994-96	-15.2%				6.3% of live births, 2003-05	11
Very Low Birthweight (<3 lbs, 5oz)	0.0% of live births, 1994-96				###	0.0% of live births, 2003-05	1*
<b>BIRTHS TO TEENS</b>							
Births to Young Teens (ages 15-17)	42.9/1,000 girls 15-17, 1994-96				66.1%	14.6/1,000 girls 15-17, 2003-05	9
Births to Older Teens (ages 18-19)	134.6/1,000 girls 18-19, 1994-96				3.9%	129.3/1,000 girls 18-19, 2003-05	66
Births to Teens (ages 15-19)	66.3/1,000 girls 15-19, 1994-96				15.7%	55.9/1,000 girls 15-19, 2003-05	37
<b>CHILD ABUSE &amp; NEGLECT</b>							
	6.1 confirmed/1,000 children, FY 1995-97	-114.1%				13.1 confirmed/1,000 children, FY 2004-06	23
<b>HIGH SCHOOL DROPOUTS</b>							
	1.4% youth <age 19, SY 2001/02-2003/04				21.5%	1.1% youth <age 19, SY 2003/04-2005/06	8
<b>VIOLENT CRIME ARRESTS</b>							
	0.0/100,000 youths 10-17, 1994-96				###	0.0/100,000 youths 10-17, 2003-05	1*
<b>MORTALITY</b>							
Infant Mortality (<age 1)	15.5/1,000 live births, 1994-96				100.0%	0.0/1,000 live births, 2003-05	1*
Child Death (ages 1-14)	0.0/100,000 children 1-14, 1994-96				###	109.1/100,000 children 1-14, 2003-05	74
Teen Death (ages 15-19)	108.1/100,000 teens 15-19, 1994-96				100.0%	0.0/100,000 teens 15-19, 2003-05	1*
Child & Teen Death (ages 1-19)	29.5/100,000 youth 1-19, 1994-96	-167.1%				78.8/100,000 youth 1-19, 2003-05	67
<b>ECONOMIC CLUSTER</b>							
	67 Economic Index, 1994-96				35.8%	43 Economic Index, 2003-05	5

■ state change

■ county change

### = zero base - cannot calculate change

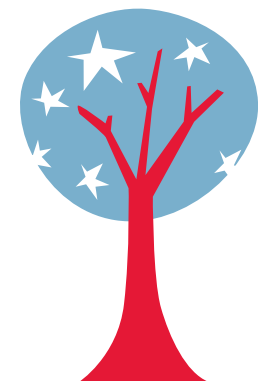
County Rank (1 = best) (77 = worst)

Changes of more than 100%—positive or negative—are graphed with broken bar

\*Indicates a tie with at least one other county.

## CHILDHOOD STRESS INDEX

Category / Indicator	Number	Rate	Rank
<b>BIRTH / GENETIC / BIOLOGICAL</b>			
Very Low Birthweight (2003-05)	0 avg annual	0.0%	1*
Autism Reported on IEPs (ages 3-21, FFY 2005-07)	2 avg annual	2.1/1,000	64
<b>ENVIRONMENTAL FACTORS</b>			
Poverty (ages 0-17, 2004)	139	17.0%	13
Unemployment (2003-05)	n/a	2.5%	2
<b>EXPOSURE TO TRAUMA</b>			
FEMA Disaster Declarations (Nov 2000-Aug 2007)	6	0.1/1,000 children	7
Adverse Childhood Experiences (ACE Index, 2006/07 Kids Count)	27.0	n/a	21
<b>ACCESS TO TREATMENT</b>			
Untreated by DMHSAS, OJA or Medicaid (ages 9-17, FY 2005-06)			
Untreated Mentally Ill & Substance-Abusers	63 avg annual	72.8%	67*
Untreated Serious Emotional Disturbance	30 avg annual	56.2%	
Suicide (ages 5-24, 2003-05)	0 avg annual	0.0/100,000	1*



Childhood Stress Rank

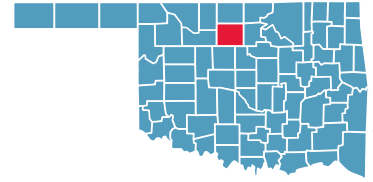
**tie for 11**

\*Indicates a tie with at least one other county.

0.0%\* or 0\* indicates that, on average, services were provided to numbers of young clients which appear to serve all of the estimated need (prevalence) in the county

# GARFIELD COUNTY

County Seat: **Enid**



Number of Children (2005): **13,781**

Number of Poor Children (2004): **2,682**

Children are **24.2%** of the county population

Child Poverty Rate: **19.6%**

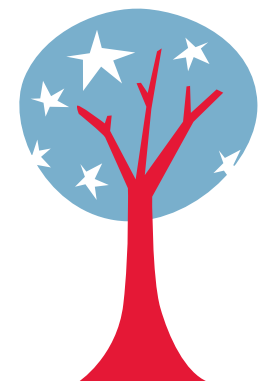
Economic Cluster: **#1, Wealthiest**

Indicator	Base Data	-	Worsened	Improved	+	Recent Data	Rank
<b>BIRTHWEIGHT</b>							
Low Birthweight (<5.5lbs)	7.3% of live births, 1994-96	-13.5%				8.3% of live births, 2003-05	55
Very Low Birthweight (<3 lbs, 5oz)	1.1% of live births, 1994-96	-4.4%				1.2% of live births, 2003-05	47
<b>BIRTHS TO TEENS</b>							
Births to Young Teens (ages 15-17)	38.1/1,000 girls 15-17, 1994-96				28.8%	27.1/1,000 girls 15-17, 2003-05	37
Births to Older Teens (ages 18-19)	110.2/1,000 girls 18-19, 1994-96	-8.8%				119.9/1,000 girls 18-19, 2003-05	60
Births to Teens (ages 15-19)	63.4/1,000 girls 15-19, 1994-96				2.5%	61.8/1,000 girls 15-19, 2003-05	44
<b>CHILD ABUSE &amp; NEGLECT</b>							
	17.6 confirmed/1,000 children, FY 1995-97	-5.1%				18.4 confirmed/1,000 children, FY 2004-06	46
<b>HIGH SCHOOL DROPOUTS</b>							
	2.4% youth <age 19, SY 2001/02-2003/04				41.4%	1.4% youth <age 19, SY 2003/04-2005/06	16
<b>VIOLENT CRIME ARRESTS</b>							
	247.6/100,000 youths 10-17, 1994-96				62.7%	92.3/100,000 youths 10-17, 2003-05	27
<b>MORTALITY</b>							
Infant Mortality (<age 1)	9.1/1,000 live births, 1994-96	-1.0%				9.2/1,000 live births, 2003-05	57
Child Death (ages 1-14)	28.4/100,000 children 1-14, 1994-96				0.5%	28.2/100,000 children 1-14, 2003-05	36
Teen Death (ages 15-19)	116.2/100,000 teens 15-19, 1994-96				1.0%	115.0/100,000 teens 15-19, 2003-05	51
Child & Teen Death (ages 1-19)	49.5/100,000 youth 1-19, 1994-96	-2.9%				50.9/100,000 youth 1-19, 2003-05	40
<b>ECONOMIC CLUSTER</b>							
	76 Economic Index, 1994-96	-5.3%				80 Economic Index, 2003-05	14

■ state change    ■ county change    ### = zero base - cannot calculate change    County Rank (1 = best) (77 = worst)  
 Changes of more than 100%—positive or negative—are graphed with broken bar    \*Indicates a tie with at least one other county.

## CHILDHOOD STRESS INDEX

Category / Indicator	Number	Rate	Rank
<b>BIRTH / GENETIC / BIOLOGICAL</b>			
Very Low Birthweight (2003-05)	11 avg annual	1.2%	47
Autism Reported on IEPs (ages 3-21, FFY 2005-07)	18 avg annual	1.3/1,000	30
<b>ENVIRONMENTAL FACTORS</b>			
Poverty (ages 0-17, 2004)	2,682	19.6%	28*
Unemployment (2003-05)	n/a	3.6%	16
<b>EXPOSURE TO TRAUMA</b>			
FEMA Disaster Declarations (Nov 2000-Aug 2007)	7	2.0/1,000 children	68
Adverse Childhood Experiences (ACE Index, 2006/07 Kids Count)	43.3	n/a	58
<b>ACCESS TO TREATMENT</b>			
Untreated by DMHSAS, OJA or Medicaid (ages 9-17, FY 2005-06)			
Untreated Mentally Ill & Substance-Abusers	674 avg annual	48.2%	18
Untreated Serious Emotional Disturbance	179 avg annual	20.6%	
Suicide (ages 5-24, 2003-05)	0 avg annual	0.0/100,000	1*



Childhood Stress Rank

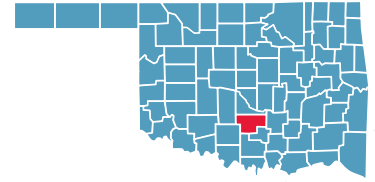
**23**

\*Indicates a tie with at least one other county.

0.0%\* or 0\* indicates that, on average, services were provided to numbers of young clients which appear to serve all of the estimated need (prevalence) in the county

# GARVIN COUNTY

County Seat: **Pauls Valley**



Number of Children (2005): **6,171**

Number of Poor Children (2004): **1,349**

Children are **22.7%** of the county population

Child Poverty Rate: **22.0%**

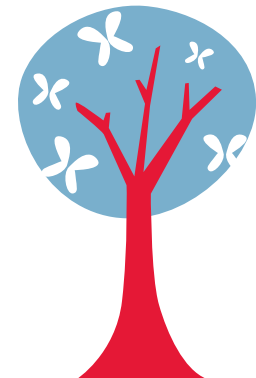
Economic Cluster: **#3, Middle**

Indicator	Base Data	-	Worsened	Improved	+	Recent Data	Rank
<b>BIRTHWEIGHT</b>							
Low Birthweight (<5.5lbs)	7.1% of live births, 1994-96	-9.8%				7.8% of live births, 2003-05	44
Very Low Birthweight (<3 lbs, 5oz)	0.8% of live births, 1994-96	-22.0%				1.0% of live births, 2003-05	25
<b>BIRTHS TO TEENS</b>							
Births to Young Teens (ages 15-17)	40.0/1,000 girls 15-17, 1994-96				31.3%	27.5/1,000 girls 15-17, 2003-05	38
Births to Older Teens (ages 18-19)	131.0/1,000 girls 18-19, 1994-96				5.1%	124.2/1,000 girls 18-19, 2003-05	62
Births to Teens (ages 15-19)	70.3/1,000 girls 15-19, 1994-96				9.5%	63.6/1,000 girls 15-19, 2003-05	50
<b>CHILD ABUSE &amp; NEGLECT</b>							
	42.8 confirmed/1,000 children, FY 1995-97				19.8%	34.3 confirmed/1,000 children, FY 2004-06	76
<b>HIGH SCHOOL DROPOUTS</b>							
	2.6% youth <age 19, SY 2001/02-2003/04	-15.0%				3.0% youth <age 19, SY 2003/04-2005/06	45
<b>VIOLENT CRIME ARRESTS</b>							
	408.8/100,000 youths 10-17, 1994-96				60.2%	162.9/100,000 youths 10-17, 2003-05	55
<b>MORTALITY</b>							
Infant Mortality (<age 1)	5.9/1,000 live births, 1994-96	-62.6%				9.6/1,000 live births, 2003-05	60
Child Death (ages 1-14)	69.7/100,000 children 1-14, 1994-96				70.6%	20.5/100,000 children 1-14, 2003-05	21
Teen Death (ages 15-19)	152.4/100,000 teens 15-19, 1994-96				13.6%	131.7/100,000 teens 15-19, 2003-05	59
Child & Teen Death (ages 1-19)	92.2/100,000 youth 1-19, 1994-96				45.6%	50.1/100,000 youth 1-19, 2003-05	38
<b>ECONOMIC CLUSTER</b>							
	161 Economic Index, 1994-96				6.2%	151 Economic Index, 2003-05	40

■ state change    ■ county change    ### = zero base - cannot calculate change    County Rank (1 = best) (77 = worst)  
 Changes of more than 100%—positive or negative—are graphed with broken bar    \*Indicates a tie with at least one other county.

## CHILDHOOD STRESS INDEX

Category / Indicator	Number	Rate	Rank
<b>BIRTH / GENETIC / BIOLOGICAL</b>			
Very Low Birthweight (2003-05)	3 avg annual	1.0%	25
Autism Reported on IEPs (ages 3-21, FFY 2005-07)	12 avg annual	1.8/1,000	50
<b>ENVIRONMENTAL FACTORS</b>			
Poverty (ages 0-17, 2004)	1,349	22.0%	45
Unemployment (2003-05)	n/a	4.3%	27
<b>EXPOSURE TO TRAUMA</b>			
FEMA Disaster Declarations (Nov 2000-Aug 2007)	11	0.6/1,000 children	35
Adverse Childhood Experiences (ACE Index, 2006/07 Kids Count)	54.7	n/a	71
<b>ACCESS TO TREATMENT</b>			
Untreated by DMHSAS, OJA or Medicaid (ages 9-17, FY 2005-06)			
Untreated Mentally Ill & Substance-Abusers	351 avg annual	52.9%	24
Untreated Serious Emotional Disturbance	112 avg annual	27.2%	
Suicide (ages 5-24, 2003-05)	1 avg annual	14.6/100,000	71



Childhood Stress Rank

**49**

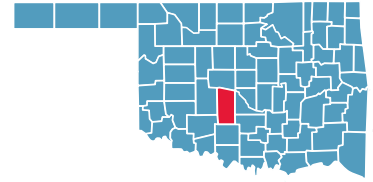
\*Indicates a tie with at least one other county.

0.0%\* or 0\* indicates that, on average, services were provided to numbers of young clients which appear to serve all of the estimated need (prevalence) in the county



# GRADY COUNTY

County Seat: Chickasha



Number of Children (2005): 11,728

Number of Poor Children (2004): 2,054

Children are 23.8% of the county population

Child Poverty Rate: 17.6%

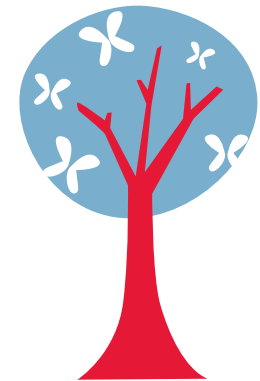
Economic Cluster: #3, Middle

Indicator	Base Data	-	Worsened	Improved	+	Recent Data	Rank
<b>BIRTHWEIGHT</b>							
Low Birthweight (<5.5lbs)	7.8% of live births, 1994-96					0.3%	7.7% of live births, 2003-05 42
Very Low Birthweight (<3 lbs, 5oz)	1.3% of live births, 1994-96					0.8%	1.3% of live births, 2003-05 50
<b>BIRTHS TO TEENS</b>							
Births to Young Teens (ages 15-17)	34.3/1,000 girls 15-17, 1994-96					42.2%	19.8/1,000 girls 15-17, 2003-05 20
Births to Older Teens (ages 18-19)	121.0/1,000 girls 18-19, 1994-96					32.0%	82.2/1,000 girls 18-19, 2003-05 22
Births to Teens (ages 15-19)	66.3/1,000 girls 15-19, 1994-96					32.2%	45.0/1,000 girls 15-19, 2003-05 21
<b>CHILD ABUSE &amp; NEGLECT</b>							
	10.5 confirmed/1,000 children, FY 1995-97					4.9%	10.0 confirmed/1,000 children, FY 2004-06 11
<b>HIGH SCHOOL DROPOUTS</b>							
	3.6% youth <age 19, SY 2001/02-2003/04					8.6%	3.3% youth <age 19, SY 2003/04-2005/06 50
<b>VIOLENT CRIME ARRESTS</b>							
	174.9/100,000 youths 10-17, 1994-96	-9.3%					191.3/100,000 youths 10-17, 2003-05 62
<b>MORTALITY</b>							
Infant Mortality (<age 1)	6.9/1,000 live births, 1994-96					9.1%	6.3/1,000 live births, 2003-05 27
Child Death (ages 1-14)	37.4/100,000 children 1-14, 1994-96					50.5%	18.5/100,000 children 1-14, 2003-05 18
Teen Death (ages 15-19)	178.3/100,000 teens 15-19, 1994-96					53.6%	82.7/100,000 teens 15-19, 2003-05 36
Child & Teen Death (ages 1-19)	73.5/100,000 youth 1-19, 1994-96					49.6%	37.0/100,000 youth 1-19, 2003-05 19
<b>ECONOMIC CLUSTER</b>							
	143 Economic Index, 1994-96					5.6%	135 Economic Index, 2003-05 31

■ state change    ■ county change    ### = zero base - cannot calculate change    County Rank (1 = best) (77 = worst)  
 Changes of more than 100%—positive or negative—are graphed with broken bar    \*Indicates a tie with at least one other county.

## CHILDHOOD STRESS INDEX

Category / Indicator	Number	Rate	Rank
<b>BIRTH / GENETIC / BIOLOGICAL</b>			
Very Low Birthweight (2003-05)	8 avg annual	1.3%	50
Autism Reported on IEPs (ages 3-21, FFY 2005-07)	15 avg annual	1.2/1,000	23
<b>ENVIRONMENTAL FACTORS</b>			
Poverty (ages 0-17, 2004)	2,054	17.6%	14
Unemployment (2003-05)	n/a	4.5%	33*
<b>EXPOSURE TO TRAUMA</b>			
FEMA Disaster Declarations (Nov 2000-Aug 2007)	11	1.1/1,000 children	53
Adverse Childhood Experiences (ACE Index, 2006/07 Kids Count)	30.8	n/a	30
<b>ACCESS TO TREATMENT</b>			
Untreated by DMHSAS, OJA or Medicaid (ages 9-17, FY 2005-06)			
Untreated Mentally Ill & Substance-Abusers	852 avg annual	66.2%	63
Untreated Serious Emotional Disturbance	468 avg annual	58.5%	
Suicide (ages 5-24, 2003-05)	1 avg annual	7.0/100,000	46



Childhood Stress Rank

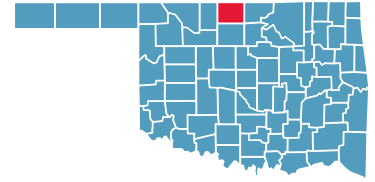
**tie for 39**

\*Indicates a tie with at least one other county.

0.0%\* or 0\* indicates that, on average, services were provided to numbers of young clients which appear to serve all of the estimated need (prevalence) in the county

# GRANT COUNTY

County Seat: **Medford**



Number of Children (2005): **1,000**

Number of Poor Children (2004): **184**

Children are **20.9%** of the county population

Child Poverty Rate: **18.4%**

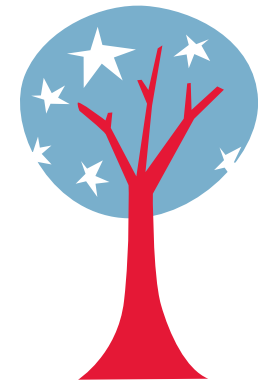
Economic Cluster: **#1, Wealthiest**

Indicator	Base Data	-	Worsened	Improved	+	Recent Data	Rank	
<b>BIRTHWEIGHT</b>								
Low Birthweight (<5.5lbs)	4.0% of live births, 1994-96					8.9%	3.7% of live births, 2003-05	3
Very Low Birthweight (<3 lbs, 5oz)	0.0% of live births, 1994-96					###	0.0% of live births, 2003-05	1*
<b>BIRTHS TO TEENS</b>								
Births to Young Teens (ages 15-17)	5.3/1,000 girls 15-17, 1994-96	-159.0%					13.8/1,000 girls 15-17, 2003-05	6
Births to Older Teens (ages 18-19)	119.0/1,000 girls 18-19, 1994-96					57.8%	50.2/1,000 girls 18-19, 2003-05	5
Births to Teens (ages 15-19)	33.9/1,000 girls 15-19, 1994-96					18.8%	27.5/1,000 girls 15-19, 2003-05	5
<b>CHILD ABUSE &amp; NEGLECT</b>								
	16.9 confirmed/1,000 children, FY 1995-97					30.6%	11.7 confirmed/1,000 children, FY 2004-06	19
<b>HIGH SCHOOL DROPOUTS</b>								
	0.3% youth <age 19, SY 2001/02-2003/04	-145.6%					0.8% youth <age 19, SY 2003/04-2005/06	4
<b>VIOLENT CRIME ARRESTS</b>								
	0.0/100,000 youths 10-17, 1994-96					###	0.0/100,000 youths 10-17, 2003-05	1*
<b>MORTALITY</b>								
Infant Mortality (<age 1)	0.0/1,000 live births, 1994-96					###	0.0/1,000 live births, 2003-05	1*
Child Death (ages 1-14)	60.4/100,000 children 1-14, 1994-96					29.5%	42.6/100,000 children 1-14, 2003-05	58
Teen Death (ages 15-19)	199.4/100,000 teens 15-19, 1994-96					55.7%	88.3/100,000 teens 15-19, 2003-05	39
Child & Teen Death (ages 1-19)	92.8/100,000 youth 1-19, 1994-96					38.0%	57.5/100,000 youth 1-19, 2003-05	45
<b>ECONOMIC CLUSTER</b>								
	42 Economic Index, 1994-96	-7.1%					45 Economic Index, 2003-05	6

■ state change    ■ county change    ### = zero base - cannot calculate change    County Rank (1 = best) (77 = worst)  
 Changes of more than 100%—positive or negative—are graphed with broken bar    \*Indicates a tie with at least one other county.

## CHILDHOOD STRESS INDEX

Category / Indicator	Number	Rate	Rank
<b>BIRTH / GENETIC / BIOLOGICAL</b>			
Very Low Birthweight (2003-05)	0 avg annual	0.0%	1*
Autism Reported on IEPs (ages 3-21, FFY 2005-07)	2 avg annual	1.7/1,000	49
<b>ENVIRONMENTAL FACTORS</b>			
Poverty (ages 0-17, 2004)	184	18.4%	22
Unemployment (2003-05)	n/a	3.5%	15
<b>EXPOSURE TO TRAUMA</b>			
FEMA Disaster Declarations (Nov 2000-Aug 2007)	7	0.1/1,000 children	8
Adverse Childhood Experiences (ACE Index, 2006/07 Kids Count)	9.3	n/a	3*
<b>ACCESS TO TREATMENT</b>			
Untreated by DMHSAS, OJA or Medicaid (ages 9-17, FY 2005-06)			
Untreated Mentally Ill & Substance-Abusers	87 avg annual	66.9%	58
Untreated Serious Emotional Disturbance	40 avg annual	49.3%	
Suicide (ages 5-24, 2003-05)	0 avg annual	0.0/100,000	1*



Childhood Stress Rank

**tie for 8**

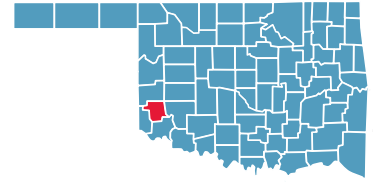
\*Indicates a tie with at least one other county.

0.0%\* or 0\* indicates that, on average, services were provided to numbers of young clients which appear to serve all of the estimated need (prevalence) in the county



# GREER COUNTY

County Seat: Mangum



Number of Children (2005): 1,024

Number of Poor Children (2004): 282

Children are 17.4% of the county population

Child Poverty Rate: 28.0%

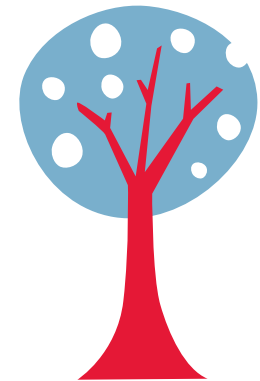
Economic Cluster: #5, Poorest

Indicator	Base Data	-	Worsened	Improved	+	Recent Data	Rank
<b>BIRTHWEIGHT</b>							
Low Birthweight (<5.5lbs)	7.4% of live births, 1994-96	-69.7%				12.6% of live births, 2003-05	77
Very Low Birthweight (<3 lbs, 5oz)	1.6% of live births, 1994-96	-8.0%				1.7% of live births, 2003-05	70
<b>BIRTHS TO TEENS</b>							
Births to Young Teens (ages 15-17)	32.1/1,000 girls 15-17, 1994-96	-81.1%				58.1/1,000 girls 15-17, 2003-05	77
Births to Older Teens (ages 18-19)	121.5/1,000 girls 18-19, 1994-96				23.6%	92.8/1,000 girls 18-19, 2003-05	28
Births to Teens (ages 15-19)	64.6/1,000 girls 15-19, 1994-96	-9.9%				71.0/1,000 girls 15-19, 2003-05	67
<b>CHILD ABUSE &amp; NEGLECT</b>							
	11.9 confirmed/1,000 children, FY 1995-97	-116.3%				25.7 confirmed/1,000 children, FY 2004-06	66
<b>HIGH SCHOOL DROPOUTS</b>							
	4.3% youth <age 19, SY 2001/02-2003/04				30.2%	3.0% youth <age 19, SY 2003/04-2005/06	44
<b>VIOLENT CRIME ARRESTS</b>							
	496.9/100,000 youths 10-17, 1994-96				86.3%	68.0/100,000 youths 10-17, 2003-05	21
<b>MORTALITY</b>							
Infant Mortality (<age 1)	5.3/1,000 live births, 1994-96	-224.0%				17.1/1,000 live births, 2003-05	73
Child Death (ages 1-14)	0.0/100,000 children 1-14, 1994-96				###	0.0/100,000 children 1-14, 2003-05	1*
Teen Death (ages 15-19)	0.0/100,000 teens 15-19, 1994-96				###	93.6/100,000 teens 15-19, 2003-05	44
Child & Teen Death (ages 1-19)	0.0/100,000 youth 1-19, 1994-96				###	29.2/100,000 youth 1-19, 2003-05	9
<b>ECONOMIC CLUSTER</b>							
	160 Economic Index, 1994-96	-43.8%				230 Economic Index, 2003-05	64

■ state change    ■ county change    ### = zero base - cannot calculate change    County Rank (1 = best) (77 = worst)  
 Changes of more than 100%—positive or negative—are graphed with broken bar    \*Indicates a tie with at least one other county.

## CHILDHOOD STRESS INDEX

Category / Indicator	Number	Rate	Rank
<b>BIRTH / GENETIC / BIOLOGICAL</b>			
Very Low Birthweight (2003-05)	1 avg annual	1.7%	70
Autism Reported on IEPs (ages 3-21, FFY 2005-07)	1 avg annual	1.1/1,000	21
<b>ENVIRONMENTAL FACTORS</b>			
Poverty (ages 0-17, 2004)	282	28.0%	70
Unemployment (2003-05)	n/a	5.8%	57
<b>EXPOSURE TO TRAUMA</b>			
FEMA Disaster Declarations (Nov 2000-Aug 2007)	6	0.2/1,000 children	10
Adverse Childhood Experiences (ACE Index, 2006/07 Kids Count)	33.8	n/a	41
<b>ACCESS TO TREATMENT</b>			
Untreated by DMHSAS, OJA or Medicaid (ages 9-17, FY 2005-06)			
Untreated Mentally Ill & Substance-Abusers	34 avg annual	30.9%	5
Untreated Serious Emotional Disturbance	0* avg annual	0.0%*	
Suicide (ages 5-24, 2003-05)	0 avg annual	0.0/100,000	1*



Childhood Stress Rank

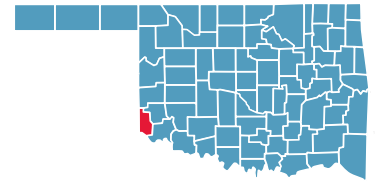
51

\*Indicates a tie with at least one other county.

0.0%\* or 0\* indicates that, on average, services were provided to numbers of young clients which appear to serve all of the estimated need (prevalence) in the county

# HARMON COUNTY

County Seat: Hollis



Number of Children (2005): 696

Number of Poor Children (2004): 211

Children are 23.0% of the county population

Child Poverty Rate: 31.2%

Economic Cluster: #5, Poorest

Indicator	Base Data	-	Worsened	Improved	+	Recent Data	Rank
<b>BIRTHWEIGHT</b>							
Low Birthweight (<5.5lbs)	9.8% of live births, 1994-96					28.7%	7.0% of live births, 2003-05 24
Very Low Birthweight (<3 lbs, 5oz)	0.8% of live births, 1994-96	-363.2%					3.5% of live births, 2003-05 77
<b>BIRTHS TO TEENS</b>							
Births to Young Teens (ages 15-17)	44.1/1,000 girls 15-17, 1994-96					28.1%	31.7/1,000 girls 15-17, 2003-05 52
Births to Older Teens (ages 18-19)	184.0/1,000 girls 18-19, 1994-96					55.3%	82.3/1,000 girls 18-19, 2003-05 23
Births to Teens (ages 15-19)	93.8/1,000 girls 15-19, 1994-96					43.7%	52.8/1,000 girls 15-19, 2003-05 33
<b>CHILD ABUSE &amp; NEGLECT</b>							
	9.5 confirmed/1,000 children, FY 1995-97					8.9%	8.7 confirmed/1,000 children, FY 2004-06 5
<b>HIGH SCHOOL DROPOUTS</b>							
	3.3% youth <age 19, SY 2001/02-2003/04	-18.2%					3.9% youth <age 19, SY 2003/04-2005/06 69
<b>VIOLENT CRIME ARRESTS</b>							
	293.3/100,000 youths 10-17, 1994-96					68.2%	93.3/100,000 youths 10-17, 2003-05 29
<b>MORTALITY</b>							
Infant Mortality (<age 1)	15.2/1,000 live births, 1994-96	-15.8%					17.5/1,000 live births, 2003-05 74
Child Death (ages 1-14)	0.0/100,000 children 1-14, 1994-96					###	0.0/100,000 children 1-14, 2003-05 1*
Teen Death (ages 15-19)	0.0/100,000 teens 15-19, 1994-96					###	400.0/100,000 teens 15-19, 2003-05 76
Child & Teen Death (ages 1-19)	0.0/100,000 youth 1-19, 1994-96					###	129.4/100,000 youth 1-19, 2003-05 73
<b>ECONOMIC CLUSTER</b>							
	216 Economic Index, 1994-96					7.4%	200 Economic Index, 2003-05 52*

■ state change

■ county change

### = zero base - cannot calculate change

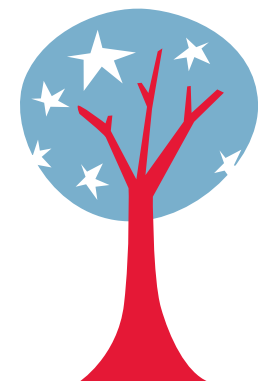
County Rank (1 = best) (77 = worst)

Changes of more than 100%—positive or negative—are graphed with broken bar

\*Indicates a tie with at least one other county.

## CHILDHOOD STRESS INDEX

Category / Indicator	Number	Rate	Rank
<b>BIRTH / GENETIC / BIOLOGICAL</b>			
Very Low Birthweight (2003-05)	1 avg annual	3.5%	77
Autism Reported on IEPs (ages 3-21, FFY 2005-07)	0 avg annual	0.0/1,000	1
<b>ENVIRONMENTAL FACTORS</b>			
Poverty (ages 0-17, 2004)	211	31.2%	76
Unemployment (2003-05)	n/a	3.7%	18*
<b>EXPOSURE TO TRAUMA</b>			
FEMA Disaster Declarations (Nov 2000-Aug 2007)	3	0.2/1,000 children	16
Adverse Childhood Experiences (ACE Index, 2006/07 Kids Count)	26.0	n/a	20
<b>ACCESS TO TREATMENT</b>			
Untreated by DMHSAS, OJA or Medicaid (ages 9-17, FY 2005-06)			
Untreated Mentally Ill & Substance-Abusers	51 avg annual	63.7%	46*
Untreated Serious Emotional Disturbance	21 avg annual	42.6%	
Suicide (ages 5-24, 2003-05)	0 avg annual	0.0/100,000	1*



Childhood Stress Rank

19

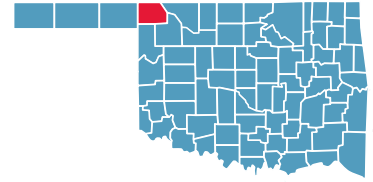
\*Indicates a tie with at least one other county.

0.0%\* or 0\* indicates that, on average, services were provided to numbers of young clients which appear to serve all of the estimated need (prevalence) in the county



# HARPER COUNTY

County Seat: **Buffalo**



Number of Children (2005): **647**

Number of Poor Children (2004): **93**

Children are **19.5%** of the county population

Child Poverty Rate: **14.3%**

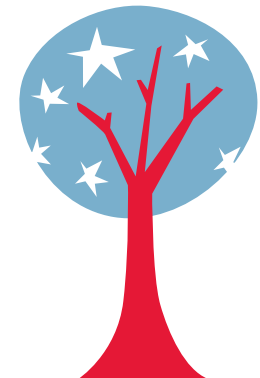
Economic Cluster: **#1, Wealthiest**

Indicator	Base Data	-	Worsened	Improved	+	Recent Data	Rank
<b>BIRTHWEIGHT</b>							
Low Birthweight (<5.5lbs)	2.0% of live births, 1994-96	-236.6%				6.9% of live births, 2003-05	20
Very Low Birthweight (<3 lbs, 5oz)	0.0% of live births, 1994-96				###	0.8% of live births, 2003-05	15
<b>BIRTHS TO TEENS</b>							
Births to Young Teens (ages 15-17)	23.3/1,000 girls 15-17, 1994-96				11.5%	20.7/1,000 girls 15-17, 2003-05	26
Births to Older Teens (ages 18-19)	111.1/1,000 girls 18-19, 1994-96	-5.5%				117.2/1,000 girls 18-19, 2003-05	53
Births to Teens (ages 15-19)	46.1/1,000 girls 15-19, 1994-96	-17.2%				54.1/1,000 girls 15-19, 2003-05	34*
<b>CHILD ABUSE &amp; NEGLECT</b>							
	7.9 confirmed/1,000 children, FY 1995-97	-94.9%				15.3 confirmed/1,000 children, FY 2004-06	30
<b>HIGH SCHOOL DROPOUTS</b>							
	0.4% youth <age 19, SY 2001/02-2003/04	-209.8%				1.3% youth <age 19, SY 2003/04-2005/06	14
<b>VIOLENT CRIME ARRESTS</b>							
	0.0/100,000 youths 10-17, 1994-96				###	0.0/100,000 youths 10-17, 2003-05	1*
<b>MORTALITY</b>							
Infant Mortality (<age 1)	0.0/1,000 live births, 1994-96				###	0.0/1,000 live births, 2003-05	1*
Child Death (ages 1-14)	89.6/100,000 children 1-14, 1994-96	-124.2%				200.8/100,000 children 1-14, 2003-05	77
Teen Death (ages 15-19)	0.0/100,000 teens 15-19, 1994-96				###	0.0/100,000 teens 15-19, 2003-05	1*
Child & Teen Death (ages 1-19)	66.1/100,000 youth 1-19, 1994-96	-103.2%				134.4/100,000 youth 1-19, 2003-05	75
<b>ECONOMIC CLUSTER</b>							
	36 Economic Index, 1994-96	-13.9%				41 Economic Index, 2003-05	4

■ state change    ■ county change    ### = zero base - cannot calculate change    County Rank (1 = best) (77 = worst)  
 Changes of more than 100%—positive or negative—are graphed with broken bar    \*Indicates a tie with at least one other county.

## CHILDHOOD STRESS INDEX

Category / Indicator	Number	Rate	Rank
<b>BIRTH / GENETIC / BIOLOGICAL</b>			
Very Low Birthweight (2003-05)	0 avg annual	0.8%	15
Autism Reported on IEPs (ages 3-21, FFY 2005-07)	0 avg annual	0.5/1,000	4
<b>ENVIRONMENTAL FACTORS</b>			
Poverty (ages 0-17, 2004)	93	14.3%	6
Unemployment (2003-05)	n/a	3.0%	3*
<b>EXPOSURE TO TRAUMA</b>			
FEMA Disaster Declarations (Nov 2000-Aug 2007)	6	0.1/1,000 children	3
Adverse Childhood Experiences (ACE Index, 2006/07 Kids Count)	25.4	n/a	18
<b>ACCESS TO TREATMENT</b>			
Untreated by DMHSAS, OJA or Medicaid (ages 9-17, FY 2005-06)			
Untreated Mentally Ill & Substance-Abusers	66 avg annual	85.7%	75
Untreated Serious Emotional Disturbance	37 avg annual	77.0%	
Suicide (ages 5-24, 2003-05)	0 avg annual	41.9/100,000	76



Childhood Stress Rank

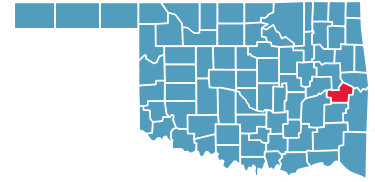
**2**

\*Indicates a tie with at least one other county.

0.0%\* or 0\* indicates that, on average, services were provided to numbers of young clients which appear to serve all of the estimated need (prevalence) in the county

# HASKELL COUNTY

County Seat: **Stigler**



Number of Children (2005): **2,908**

Number of Poor Children (2004): **727**

Children are **23.9%** of the county population

Child Poverty Rate: **25.1%**

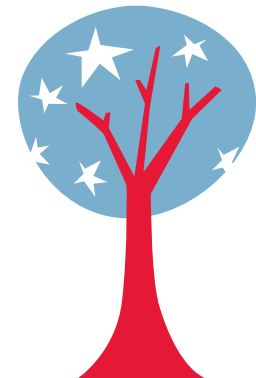
Economic Cluster: **#5, Poorest**

Indicator	Base Data	-	Worsened	Improved	+	Recent Data	Rank
<b>BIRTHWEIGHT</b>							
Low Birthweight (<5.5lbs)	6.7% of live births, 1994-96	-17.1%				7.8% of live births, 2003-05	46
Very Low Birthweight (<3 lbs, 5oz)	0.7% of live births, 1994-96				5.1%	0.6% of live births, 2003-05	11
<b>BIRTHS TO TEENS</b>							
Births to Young Teens (ages 15-17)	42.2/1,000 girls 15-17, 1994-96				27.7%	30.5/1,000 girls 15-17, 2003-05	47
Births to Older Teens (ages 18-19)	175.1/1,000 girls 18-19, 1994-96				28.3%	125.6/1,000 girls 18-19, 2003-05	63
Births to Teens (ages 15-19)	83.7/1,000 girls 15-19, 1994-96				23.4%	64.1/1,000 girls 15-19, 2003-05	54
<b>CHILD ABUSE &amp; NEGLECT</b>							
	20.4 confirmed/1,000 children, FY 1995-97				45.8%	11.1 confirmed/1,000 children, FY 2004-06	17
<b>HIGH SCHOOL DROPOUTS</b>							
	3.5% youth <age 19, SY 2001/02-2003/04				31.3%	2.4% youth <age 19, SY 2003/04-2005/06	34
<b>VIOLENT CRIME ARRESTS</b>							
	98.2/100,000 youths 10-17, 1994-96				0.3%	97.9/100,000 youths 10-17, 2003-05	31
<b>MORTALITY</b>							
Infant Mortality (<age 1)	17.8/1,000 live births, 1994-96				76.3%	4.2/1,000 live births, 2003-05	12
Child Death (ages 1-14)	75.8/100,000 children 1-14, 1994-96				42.6%	43.5/100,000 children 1-14, 2003-05	59
Teen Death (ages 15-19)	39.2/100,000 teens 15-19, 1994-96	-969.5%				418.8/100,000 teens 15-19, 2003-05	77
Child & Teen Death (ages 1-19)	65.6/100,000 youth 1-19, 1994-96	-113.5%				140.0/100,000 youth 1-19, 2003-05	76
<b>ECONOMIC CLUSTER</b>							
	245 Economic Index, 1994-96				11.0%	218 Economic Index, 2003-05	59

■ state change    ■ county change    ### = zero base - cannot calculate change    County Rank (1 = best) (77 = worst)  
 Changes of more than 100%—positive or negative—are graphed with broken bar    \*Indicates a tie with at least one other county.

## CHILDHOOD STRESS INDEX

Category / Indicator	Number	Rate	Rank
<b>BIRTH / GENETIC / BIOLOGICAL</b>			
Very Low Birthweight (2003-05)	1 avg annual	0.6%	11
Autism Reported on IEPs (ages 3-21, FFY 2005-07)	2 avg annual	0.8/1,000	13
<b>ENVIRONMENTAL FACTORS</b>			
Poverty (ages 0-17, 2004)	727	25.1%	55*
Unemployment (2003-05)	n/a	5.5%	52*
<b>EXPOSURE TO TRAUMA</b>			
FEMA Disaster Declarations (Nov 2000-Aug 2007)	7	0.4/1,000 children	29
Adverse Childhood Experiences (ACE Index, 2006/07 Kids Count)	32.2	n/a	36
<b>ACCESS TO TREATMENT</b>			
Untreated by DMHSAS, OJA or Medicaid (ages 9-17, FY 2005-06)			
Untreated Mentally Ill & Substance-Abusers	196 avg annual	63.1%	48*
Untreated Serious Emotional Disturbance	84 avg annual	43.5%	
Suicide (ages 5-24, 2003-05)	0 avg annual	0.0/100,000	1*



Childhood Stress Rank

**24**

\*Indicates a tie with at least one other county.

0.0%\* or 0\* indicates that, on average, services were provided to numbers of young clients which appear to serve all of the estimated need (prevalence) in the county

